

Lassa Fever Impact Analysis: First Quarter 2025

Case distribution, Regional Trends, and Mortality.

Designed by: Isinene Onoabaghe MBBS,PGMD,MSc

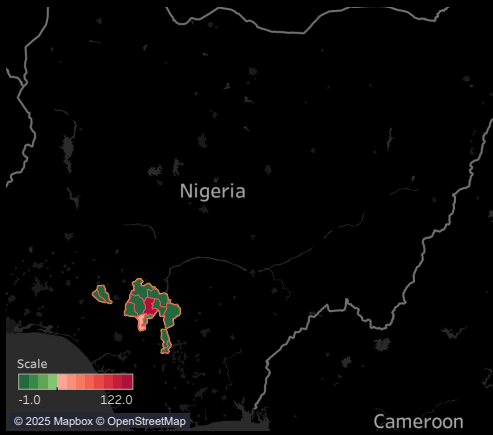


Overview:

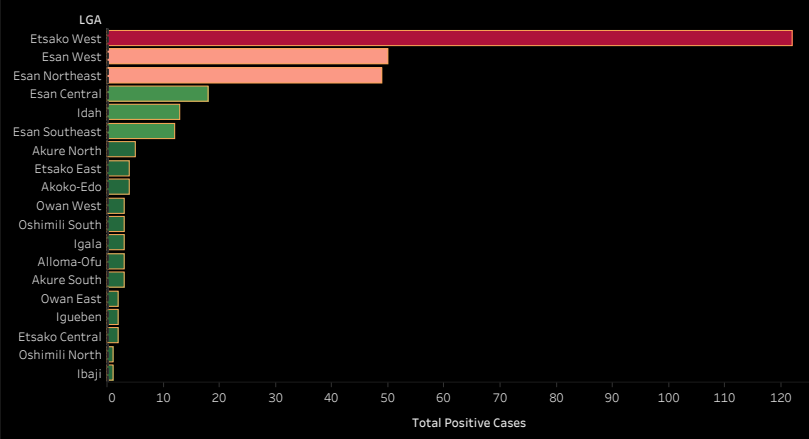
Lassa Fever, a viral hemorrhagic fever endemic to West Africa, continues to pose significant public health challenges. Our analysis of Lassa Fever cases in the first quarter of 2025 highlights key trends in case distribution, mortality, and regional variations.

- ▶ **Case Distribution:** In the first quarter of 2025, a total of 1,787 suspected Lassa Fever cases were recorded at Irrua Specialist Teaching Hospital (ISTH), Edo State, Nigeria.
- ▶ **Regional Hotspots:** Majority of cases were concentrated in **Etsako West, Esan West, and Esan North East** LGAs.
- ▶ **Mortality Rate:** **297** confirmed positive cases were identified by RT-PCR, representing a positivity rate of **16.6%**. The overall case fatality rate among confirmed positives was **9.8%**.
- ▶ **Gender Distribution:** **57%** males and **43%** females tested positive, with mortality rates reflecting similar disparities.
- ▶ **Age Group Trends:** **Age group 0-19** had the highest incidence rates while **80+** had the highest mortality rates.
- ▶ **Weekly Trends:** Significant increases in cases during specific weeks highlight the need for enhanced monitoring during peak periods.
- ▶ **Testing and Mortality:** Most deaths occurred among cases who were tested and confirmed within **≤2 days** of presentation, suggesting a correlation between early testing and clinical severity.

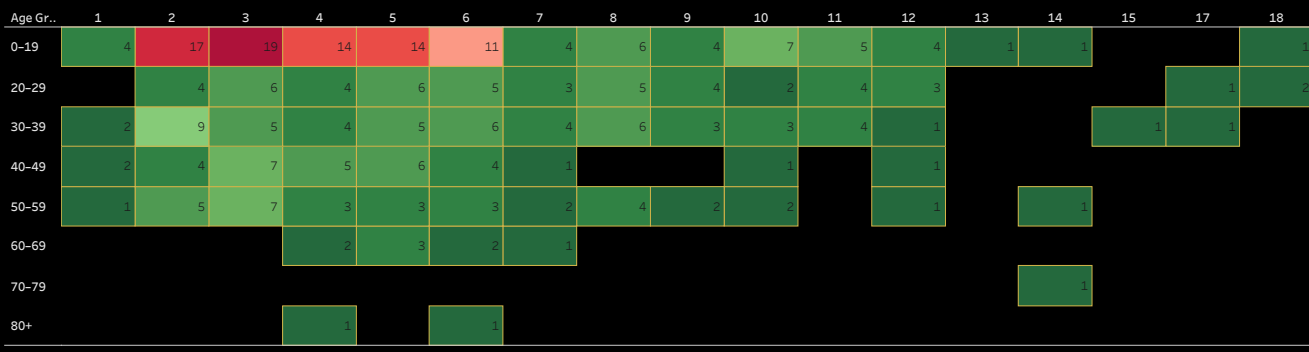
Lassa Fever Distribution by Region: First Quarter 2025



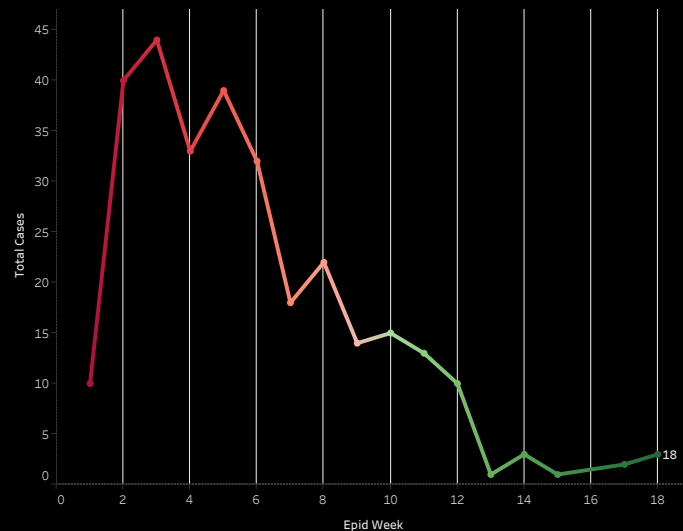
Distribution of Lassa Fever Positive Cases Across LGAs (Q1 2025)



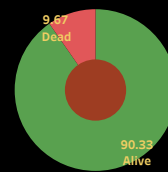
Positive Lassa Fever Cases by Age-group



Weekly Trend of Positive Lassa Fever Cases: Q1 2025



Total Percentage of Mortality



Percentage of Mortality By Sex

